



**THE  
COMMONWEALTH OF THE  
BAHAMAS**

**VITAL STATISTICS  
REPORT**

**2012**

**Department of Statistics  
Ministry of Finance  
P.O. Box N-3904  
Nassau, NP  
Bahamas**

**STA/PUB-VITAL/02-3**

## **PREFACE**

The annual report of vital statistics is produced by the Department of Statistics from registered vital events of the Registrar General's Department. This includes births, deaths, and marriages for 2012. Statistical information on divorces was compiled from the records of the Supreme Court Registry. The divorces presented in this report are limited to the number of Decree Absolutes registered yearly.

National registration of vital events such as births and deaths became mandatory within the legal framework of this country over two centuries ago. Statistical tabulations of births and deaths in The Bahamas which date back to the 1940s were produced by the Registrar General's Department (Civil Registry). In 1968, the Department of Statistics was established by law. As a result, all statistical reporting of vital events and other data became the responsibility of the Department.

The Department of Statistics maintains a close working relationship with the Ministry of Health, as it pertains to a number of vital statistics occurrences such as the annual census of live births, infant mortalities and stillbirths. Crude rates of these events are estimated on the number of occurrences. These annual percentages and rates are key when measuring demographic trends.

The annual registration of births in The Bahamas has increased considerably in recent years. Analysis revealed that for 2012, the country recorded 4,866 occurrences of live births. Approximately 397 children or (8.1 %) were not registered and are not included in the annual birth analysis for this year. .

## TABLE OF CONTENTS

	PAGE
Preface	
Table of Contents	i - iii
Data Notes & Explanations	iv
Highlights of Vital Events	v

## SUMMARY OF VITAL EVENTS

### TABLE

1	Summary of Vital Statistics, All Bahamas: 2004 - 2012	2
2	Registered Live-births by Age Group, Birth Place of Mother and Sex of Child, All Bahamas: 2009 – 2012	3 - 4
3	Age-Specific Mortality Rates by Sex, Based on Registered Deaths, All Bahamas: 2012	5
4	Registered Live-Births and Deaths by Island of Occurrence, All Bahamas: 2009 – 2012	7
5	Major Causes of Death by Number and Percentage Distribution, Within Selected Islands: 2012	10
6	Age-Specific Fertility Rates, Based on Live-births by Occurrence, All Bahamas: 2010 – 2012	12
7	Fertility and Reproduction Rates: 2000 – 2012	13
8	Registered Deaths by age Group and Sex, All Bahamas: 2005– 2012	14
9	Registered Deaths by Cause and Sex of Deceased, All Bahamas: 2009 – 2012	15 –16

## SECTION I - LIVE-BIRTHS

TABLE		PAGE
	Section I – Live-Births	17
10	Registered Live-Births by Usual Residence and Age Group of Mother, All Bahamas: 2012	18
11	Registered Live-Births by Month, Sex and Usual Residence of Mother, All Bahamas: 2012	19
12	Registered Live-Births by Region, Age-Group and Marital Status of Mother, All Bahamas: 2012	20
13	Registered Live-Births by Birth Order and Age-Group of Mother, All Bahamas: 2012	21

## SECTION II – INFANT DEATHS

	Section II – Infant Deaths	22
14	Registered Stillbirths and Infant Deaths by Duration of Life, Island and Month of Occurrence, All Bahamas: 2012	23
15	Registered Infant Deaths by Cause, Sex and Duration of life, All Bahamas: 2012	24

## SECTION III – DEATHS

	Section III – Deaths	25
16	Registered Deaths by Cause and Age-Group of Deceased (Both Sexes), All Bahamas: 2012	26 – 28
17	Registered Deaths by Age-Group and Marital Status of Deceased (Both Sexes), All Bahamas: 2012	29

## SECTION IV - MARRIAGES

<b>TABLE</b>		<b>PAGE</b>
	<b>Section IV – Marriages</b>	<b>30</b>
<b>18</b>	<b>Marriages by Island and Month of Occurrence, All Bahamas: 2012</b>	<b>31</b>
<b>19</b>	<b>Marriages by Previous Marital Status of Bride and Bridegroom, All Bahamas: 2012</b>	<b>32</b>
<b>20</b>	<b>Marriages by Age-Group of Bride and Bridegroom, All Bahamas: 2012</b>	<b>33</b>
<b>CHARTS</b>		
<b>I</b>	<b>Selected Vital Events Rates, All Bahamas: 2008 – 2012</b>	<b>1</b>
<b>II</b>	<b>Registered Live Births and Deaths, All Bahamas: 2009 – 2012</b>	<b>6</b>
<b>III</b>	<b>Major Causes of Death, All Bahamas: 2012</b>	<b>8</b>
<b>IV</b>	<b>Major Causes of Death by Number and Percentage Distribution, New Providence and Grand Bahama: 2012</b>	<b>9</b>
<b>V</b>	<b>Age-Specific Fertility Rates Based on Live Births by Occurrences, All Bahamas: 2010 – 2012</b>	<b>11</b>
<b>APPENDIX -- Definitions</b>		<b>34 - 37</b>

## DATA NOTES & EXPLANATIONS

<b>Age Group</b>	Single years of age are assembled for the purposes of data presentation and analysis.
<b>Age-Specific Rate</b>	Rate obtained for specific age group of the population.
<b>Birth</b>	Live births.
<b>Country of Birth</b>	Country where mother was born.
<b>Birth Order</b>	The sequence of births (also called parity) to a woman from the first to the last birth.
<b>Crude Rate</b>	Crude rates for live births, deaths, infant deaths and stillbirths are estimated on the number of occurrences reported for the year. Crude rates for deaths and marriages are based on the registered account.
<b>Median Age</b>	The age at which half the population is younger and half is older.
<b>Note –</b>	All death tables with the exception of table 14 exclude stillbirths.

### SYMBOL

<b>N. A.</b>	Not Available.
<b>R</b>	Revised.
<b>(‘000)</b>	Thousands
<b>UND</b>	Under

## HIGHLIGHTS OF VITAL EVENTS: 2012

### LIVE BIRTHS

- The number of live birth occurrences, continue to trend downwards from 5,854 in 2007 to 4,866 for the current year. Crude rate for the same period has decreased by approximately four percentage points and by more than half of one percentage point from the previous year (Table 1).
- Single (never married) mothers' contribution to the annual total births increased marginally, from 61% in 2011 to 62% in this current year (Table 12).
- The number of registered live births to teen mothers remained the same from the year before (Table 10).
- Births to foreign born mothers were 689. Of these foreign births 502 or 72.9% were to women of Haitian origin (Table 2).

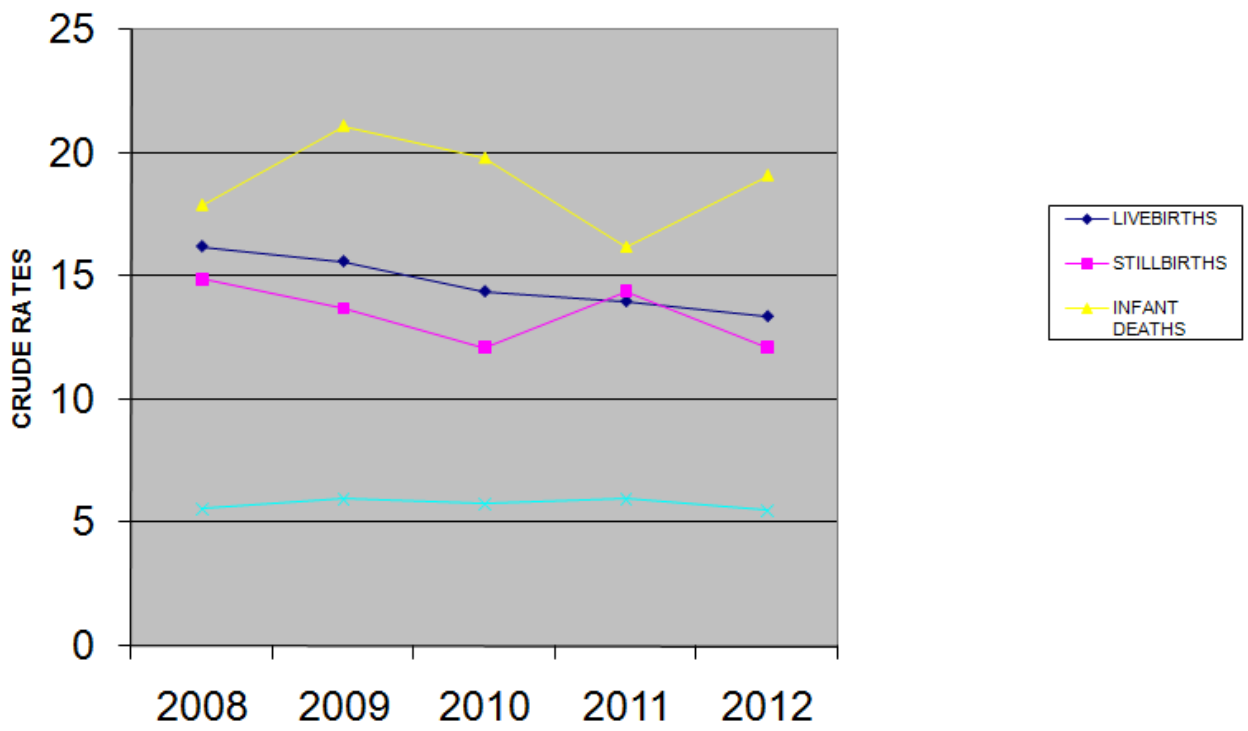
### DEATHS

- The annual mortality rate for The Bahamas decreased slightly, from 6.1 in 2011 to 5.6 in 2012 (Table 1).
- The incidences of death were highest among males at 1,091 and a rate of 6.2 per one thousand male population. In the female population, the number that occurred remained the same as the previous year, at 4.9 per 1000 female population (Table 3).
- The leading causes of deaths were heart diseases (21%), cancers (19%), accidents, suicide and Homicide (murder) claimed (12%) (Table 5).
- Infant mortality rate grew by nearly three percentage points, from 16.2 in 2011 to 19.1 in the year under review. On the other hand, stillbirths decreased by 2.3 from the previous year (Table 1).

### MARRIAGES

- The rate of marriages by residents dropped by nearly two percentage points during 2012, representing the lowest rate in recent years (Table 1).

CHART I SELECTED VITAL EVENTS RATES, ALL BAHAMAS: 2008 - 2012





SUMMARY OF VITAL STATISTICS, ALL BAHAMAS: 2004 - 2012

TABLE 1

ITEM	2004	2005	2006	2007	2008	2009	2010	2011	2012
POPULATION ('000)*	321	325	330	334	338	342	351(a)	358P	363P
LIVE BIRTHS (b)	5,154	5,548	5,296	5,854	5,480	5,348	5,049	5,000	4,866
CRUDE RATE++	16.1	17.1	16.0	17.5	16.2	15.6	14.4	14.0	13.4
DEATHS	1,736	1,824	1,730	1,798	1,890	2067 R	2056 R	2150 R	2029 R
CRUDE RATE++	5.4	5.6	5.2	5.4	5.6	6.0	5.9	6.0	5.6
NATURAL INCREASE	3,418	3,724	3,566	4,056	3,590	3,281	2,993	2,850	2,871
CRUDE RATE++	10.6	11.5 R	10.8	12.1	10.6	9.6	8.5	8.0	7.9
INFANT DEATHS	89	109	96	103	98	113	100	81	93
CRUDE RATE**	17.3	19.6	18.1	17.6	17.9	21.1	19.8	16.2	19.1
STILL BIRTHS	96	86	72	83	82	74	62	73	59
CRUDE RATE**R	18.3	15.3	13.4	14.0	14.9	13.7	12.1	14.4	12.1
NEONATAL DEATHS	47	70	64	78	55	46	42	49	60
CRUDE RATE**	9.1	12.6	12.1	13.3	10.0	8.6	8.3	9.8	12.3
PERINATAL DEATHS	129	150	130	150	111	105	102	103	98
CRUDE RATE**	25.0	27	24.5	25.6	20.3	19.6	20.2	20.6	20.1
MALE MEDIAN AGE	28	28	28	28	29	29	29	25	29
FEMALE MEDIAN AGE	29	30	30	30	31	31	30	28	31
% POPULATION UNDER 15	27.9	27.5	27.0	26.5	26.0	26.0	26.8	29.7	25.6
% ELDERLY 65 AND OVER	5.4	5.5	5.6	5.8	5.8	6.0	6.2	4.9	6.3
MARRIAGES	2,043	2,508	2,599	2,021	1,969	1,974	1,939	2,204	1,941
CRUDE RATE++	6.4	7.7	7.9	6.1	5.8	5.8	5.5	6.2	5.3
DIVORCES AND ANNULMENTS	N.A.	N.A.	433	333	245	N A	N A	452	N.A.
CRUDE RATE++			1.3	1.0	0.7 P			1.3	

(a) 2010 Census population

(b) Annual number of live births occurrences

\* Mid-gear Population projection

++ Crude Rate per 1,000 population

\*\* Crude Rate per 1,000 Livebirths

R - Revised

P - Provisional

N A - Not Available

All rates are calculated based on per thousand mid gear population

REGISTERED LIVE-BIRTHS BY AGE GROUP, BIRTH PLACE OF MOTHER AND SEX OF CHILD,  
ALL BAHAMAS: 2009 - 2012

TABLE 2

YEAR AND BIRTH PLACE OF MOTHER	AGE GROUP OF MOTHER AND SEX OF CHILD																							
	TOTAL		10 - 14		15 - 19		20 - 24		25 - 29		30 - 34		35 - 39		40 - 44		45 - 49		50 AND OVER		NOT STATED			
	M	F	M	F	M	F	M	F	M	F	M	F	M	F	M	F	M	F	M	F	M	F		
<b>2009</b>																								
BAHAMAS	2,043	2,104	3	2	260	244	522	561	511	513	409	414	262	275	66	84	6	7	-	-	4	4		
HAITI	352	318	-	-	9	8	59	37	103	97	110	102	50	53	17	15	2	3	-	-	2	3		
JAMAICA	105	89	-	-	3	3	18	10	20	24	31	31	24	17	9	4	-	-	-	-	-	-		
OTHER CARIBBEAN COUNTRIES	15	13	-	-	-	-	1	1	5	5	5	-	3	6	1	1	-	-	-	-	-	-		
OTHER FOREIGN COUNTRIES	1	-	-	-	-	-	-	-	1	-	-	-	-	-	-	-	-	-	-	-	-	-		
NOT STATED	-	-	-	-	-	-	-	-	-	-	-	-	-	-	-	-	-	-	-	-	-	-		
<b>TOTAL</b>	<b>2,516</b>	<b>2,524</b>	<b>3</b>	<b>2</b>	<b>272</b>	<b>255</b>	<b>600</b>	<b>609</b>	<b>640</b>	<b>639</b>	<b>555</b>	<b>547</b>	<b>339</b>	<b>351</b>	<b>93</b>	<b>104</b>	<b>8</b>	<b>10</b>	<b>-</b>	<b>-</b>	<b>6</b>	<b>7</b>		
<b>2010</b>																								
BAHAMAS	2,126	1,995	7	5	286	249	537	485	539	513	408	432	270	237	72	73	7	1	-	-	-	-		
HAITI	271	279	-	-	10	5	28	50	76	71	90	93	45	45	20	15	2	-	-	-	-	-		
JAMAICA	84	93	-	-	5	4	14	18	17	19	24	23	16	19	7	8	-	2	-	-	-	-		
OTHER CARIBBEAN COUNTRIES	13	16	1	-	-	-	-	2	5	4	1	3	6	7	1	-	-	-	-	-	-	-		
OTHER FOREIGN COUNTRIES	20	17	-	-	1	-	1	-	2	5	7	3	7	8	1	1	1	-	-	-	-	-		
NOT STATED	-	1	-	-	-	-	-	-	-	-	-	1	-	-	-	-	-	-	-	-	-	-		
<b>TOTAL</b>	<b>2,514</b>	<b>2,401</b>	<b>8</b>	<b>5</b>	<b>302</b>	<b>258</b>	<b>580</b>	<b>555</b>	<b>639</b>	<b>612</b>	<b>530</b>	<b>555</b>	<b>344</b>	<b>316</b>	<b>101</b>	<b>97</b>	<b>10</b>	<b>3</b>	<b>-</b>	<b>-</b>	<b>-</b>	<b>-</b>		

REGISTERED LIVE-BIRTHS BY AGE GROUP, BIRTH PLACE OF MOTHER AND SEX OF CHILD,  
ALL BAHAMAS: 2009 - 2012

TABLE 2 CONT'D

YEAR AND BIRTH PLACE OF MOTHER	AGE GROUP OF MOTHER AND SEX OF CHILD																					
	TOTAL		10 - 14		15 - 19		20 - 24		25 - 29		30 - 34		35 - 39		40 - 44		45 - 49		50 AND OVER		NOT STATED	
	M	F	M	F	M	F	M	F	M	F	M	F	M	F	M	F	M	F	M	F	M	F
2011																						
BAHAMAS	1,983	2,013	2	3	232	243	376	371	588	609	336	333	347	386	58	40	44	28	-	-	-	-
HAITI	285	266	-	-	10	6	32	37	70	82	77	61	77	62	12	11	7	7	-	-	-	-
JAMAICA	99	97	-	-	3	1	10	14	26	21	21	16	31	39	5	2	3	4	-	-	-	-
OTHER CARIBBEAN COUNTRIES	7	7	-	-	-	-	-	-	2	1	1	3	3	-	1	3	-	-	-	-	-	-
OTHER FOREIGN COUNTRIES	-	-	-	-	-	-	-	-	-	-	-	-	-	-	-	-	-	-	-	-	-	-
NOT STATED	-	-	-	-	-	-	-	-	-	-	-	-	-	-	-	-	-	-	-	-	-	-
TOTAL	2,374	2,383	2	3	245	250	418	422	686	713	435	413	458	487	76	56	54	39	-	-	-	-
2012																						
BAHAMAS	1,921	1,859	2	2	245	227	474	462	497	471	384	370	247	239	70	83	2	5	-	-	-	-
HAITI	268	234	-	-	12	7	35	30	64	50	84	81	55	47	15	15	3	4	-	-	-	-
JAMAICA	79	85	-	-	4	2	15	12	20	17	21	24	15	26	4	4	-	-	-	-	-	-
OTHER CARIBBEAN COUNTRIES	12	11	-	-	-	-	1	-	1	4	8	1	1	4	1	1	-	1	-	-	-	-
OTHER FOREIGN COUNTRIES	-	-	-	-	-	-	-	-	-	-	-	-	-	-	-	-	-	-	-	-	-	-
NOT STATED	-	-	-	-	-	-	-	-	-	-	-	-	-	-	-	-	-	-	-	-	-	-
TOTAL	2,280	2,189	2	2	261	236	525	504	582	542	497	476	318	316	90	103	5	10	-	-	-	-

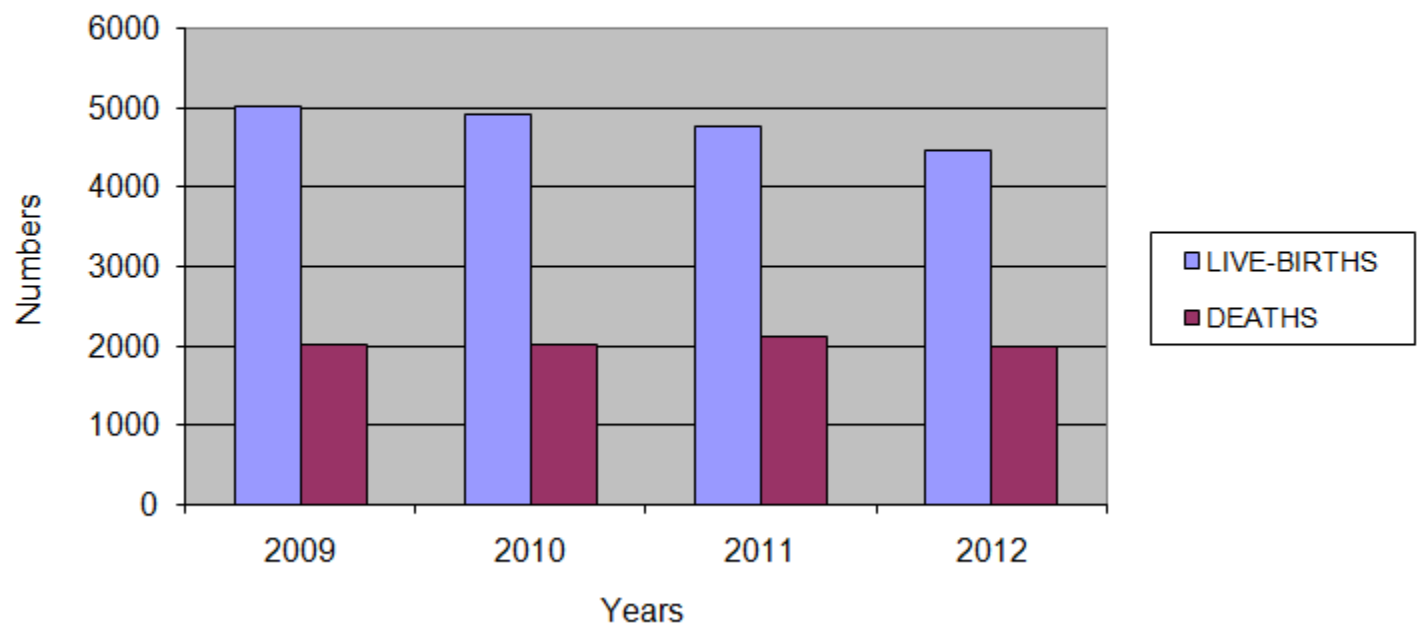
**AGE-SPECIFIC MORTALITY RATES BY SEX, BASED ON  
REGISTERED DEATHS, ALL BAHAMAS: 2012**

**TABLE 3**

AGE-GROUP	MALES			FEMALES		
	POPULATION	DEATHS	DEATH RATE	POPULATION	DEATHS	DEATH RATE
0	3,470	26	7.5	3,170	31	9.8
1	3,360	5	1.5	3,100	5	1.6
2	3,300	2	0.6	3,070	1	0.3
3	3,290	-	-	3,070	1	0.3
4	3,290	3	0.9	3,080	1	0.3
5 - 9	16,280	5	0.3	15,130	4	0.3
10 - 14	14,680	6	0.4	14,620	2	0.1
15 - 19	15,430	17	1.1	15,530	10	0.6
20 - 24	14,320	42	2.9	14,970	15	1.0
25 - 29	13,050	42	3.2	13,500	7	0.5
30 - 34	12,630	52	4.1	12,910	20	1.5
35 - 39	13,370	47	3.5	14,030	37	2.6
40 - 44	13,280	57	4.3	14,320	42	2.9
45 - 49	12,940	72	5.6	13,840	58	4.2
50 - 54	11,220	84	7.5	12,040	75	6.2
55 - 59	8,210	95	11.6	9,030	53	5.9
60 - 64	5,710	83	14.5	6,460	66	10.2
65 - 69	4,150	87	21.0	4,960	60	12.1
70 - 74	2,920	95	32.5	3,710	88	23.7
75 - 79	1,710	92	53.8	2,380	84	35.3
80 - 84	518	81	156.4	1,198	88	73.5
85 - 89	215	61	283.7	598	55	92.0
90 +	107	37	345.8	444	99	223.0
<b>TOTAL</b>	<b>177,450</b>	<b>1,091</b>	<b>6.1</b>	<b>185,160</b>	<b>902</b>	<b>4.9</b>

**NOTE:** Population totals may be off due to rounding.

CHART II: REGISTERED LIVE-BIRTHS AND DEATHS, ALL BAHAMAS: 2009 - 2012

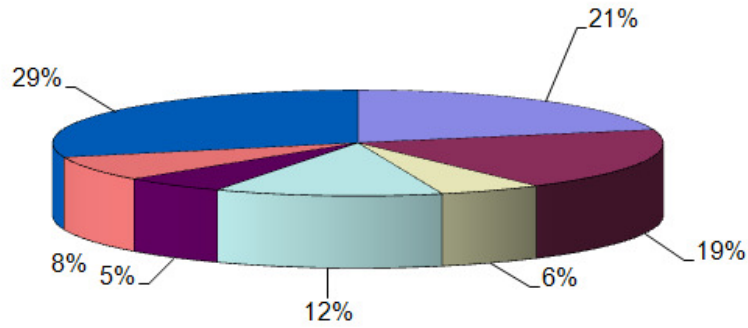


**REGISTERED LIVE-BIRTHS AND DEATHS BY ISLAND OF OCCURRENCE,  
ALL BAHAMAS: 2009 - 2012**

**TABLE 4**

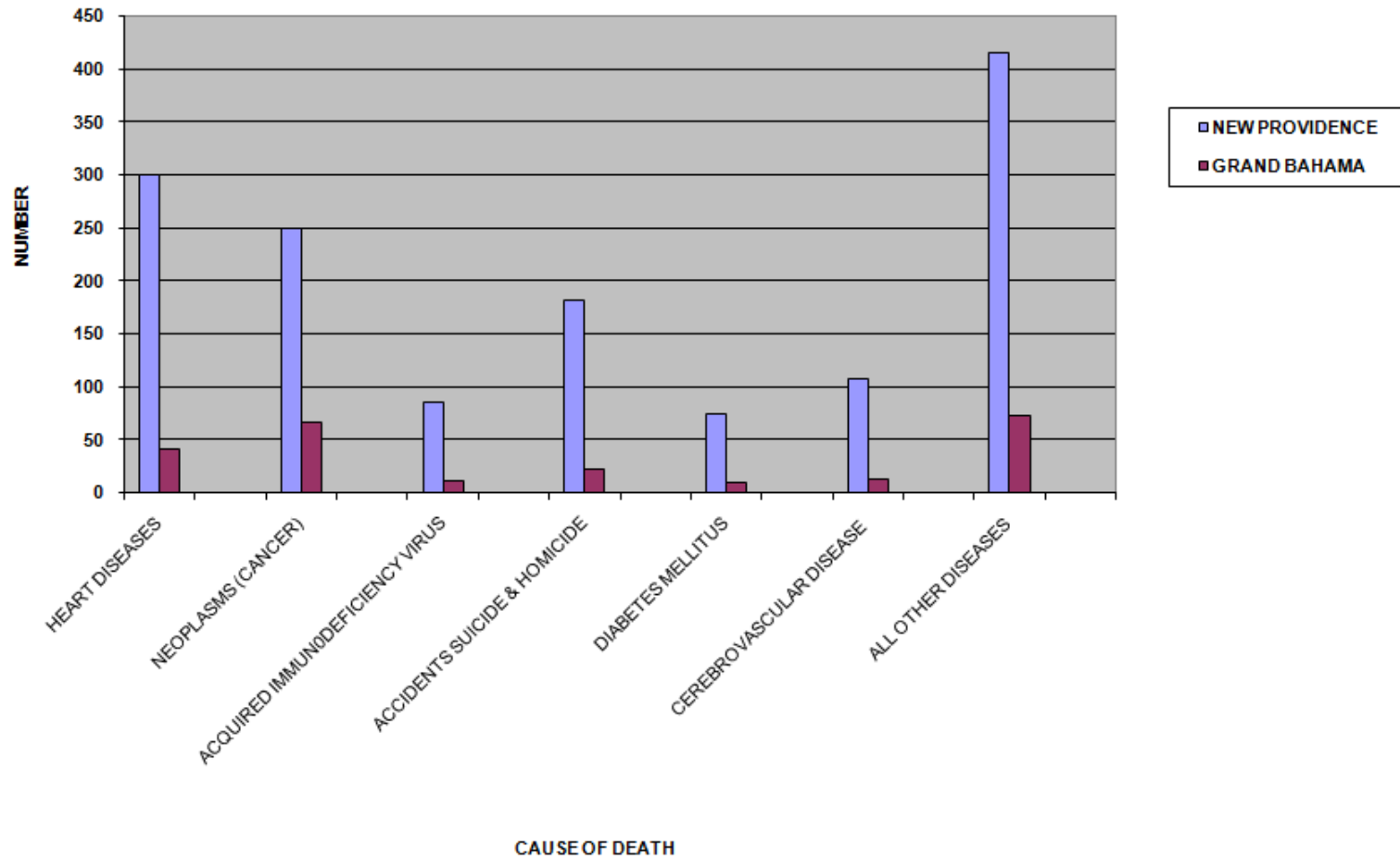
ISLAND OF OCCURRENCE	2009		2010		2011		2012	
	LIVE-BIRTHS	DEATHS	LIVE-BIRTHS	DEATHS	LIVE-BIRTHS	DEATHS	LIVE-BIRTHS	DEATHS
NEW PROVIDENCE	4225	1,615	4114	1,628	4020	1,678	3,741	1,607
GRAND BAHAMA	790	242	792	236	722	271	717	222
ABACO	5	44	1	39	9	33	5	57
ACKLINS	-	2	-	-	-	-	-	1
ANDROS	1	16	2	22	1	21	1	17
BERRY ISLANDS	-	3	1	2	-	-	-	3
BIMINI AND CAT CAY	-	9	1	13	-	7	1	6
CAT ISLAND	-	2	-	1	-	2	-	5
CROOKED ISLAND AND LONG CAY	-	1	-	1	-	-	-	2
ELEUTHERA	2	29	3	20	1	26	-	23
EXUMA AND CAYS	1	16	1	24	1	23	-	17
HARBOUR ISLAND	1	9	-	8	1	11	1	11
INAGUA	-	3	-	5	-	8	-	1
LONG ISLAND	1	17	-	11	2	13	-	9
MAYAGUANA	-	-	-	1	-	-	-	-
RAGGED ISLAND	-	-	-	-	-	1	-	1
SAN SALVADOR AND RUM CAY	1	4	-	1	-	6	-	1
SPANISH WELLS	-	9	-	11	-	17	-	10
NOT STATED	-	-	-	-	-	-	3	-
<b>TOTAL</b>	<b>5,027</b>	<b>2,021</b>	<b>4,915</b>	<b>2,023</b>	<b>4757</b>	<b>2,117</b>	<b>4,469</b>	<b>1,993</b>

**CHART III: MAJOR CAUSES OF DEATH, ALL BAHAMAS: 2012**



■ HEART DISEASES	■ NEOPLASMS (CANCER)
□ ACQUIRED IMMUNODEFICIENCY VIRUS	□ ACCIDENTS SUICIDE & HOMICIDE
■ DIABETES MELLITUS	■ CEREBROVASCULAR DISEASE
■ ALL OTHER DISEASES	

CHART IV: MAJOR CAUSES OF DEATH,  
NEW PROVIDENCE & GRAND BAHAMA: 2012





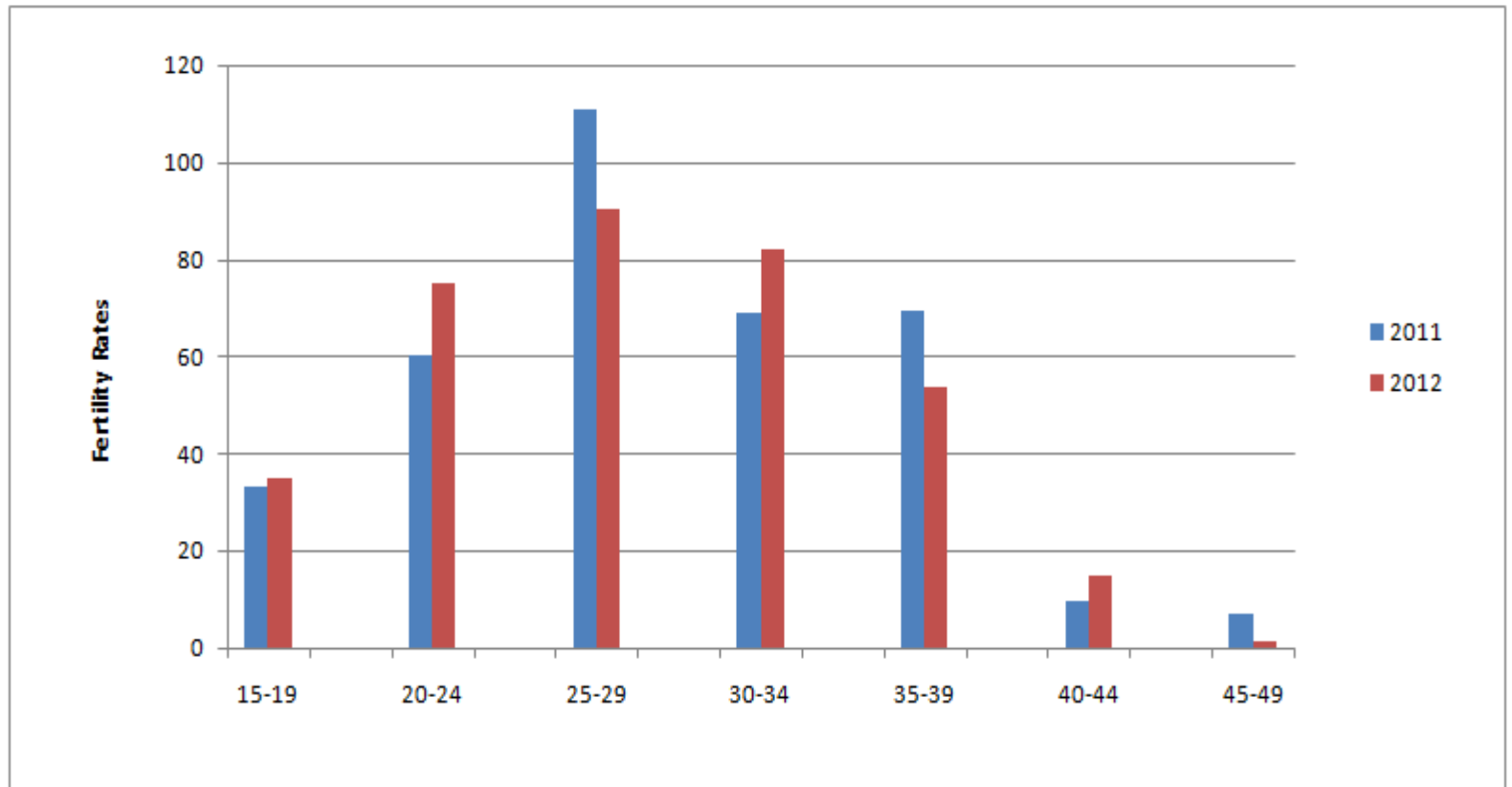
MAJOR CAUSES OF DEATH BY NUMBER AND PERCENTAGE DISTRIBUTION WITHIN SELECTED ISLANDS: 2012

TABLE 5

ISLAND (USUAL RESIDENCE)	TOTAL ALL CAUSES		HEART DISEASES (I00-I15, I20-I51)		NEOPLASMS (CANCER) (C00-D48)		ACQUIRED IMMUNODEFICIENCY VIRUS [HIV] (B20-B24)		ACCIDENTS SUICIDE & HOMICIDE (V01-Y89)		DIABETES MELLITUS (E10-E14)		CEREBROVASCULAR DISEASE (I60-I69)		ALL OTHER DISEASES	
	DEATHS	%	DEATHS	%	DEATHS	%	DEATHS	%	DEATHS	%	DEATHS	%	DEATHS	%	DEATHS	%
NEW PROVIDENCE	1,414	100	300	21	250	18	85	6	182	13	74	5	107	8	416	29
GRAND BAHAMA	234	100	41	18	67	29	11	5	22	9	9	4	12	5	72	31
ABACO	76	100	19	25	14	18	3	4	8	11	4	5	7	9	21	28
ANDROS	43	100	7	16	7	16	4	9	5	12	5	12	5	12	10	23
ELEUTHERA	55	100	14	29	9	16	1	2	1	2	6	11	8	15	16	29
EXUMA	30	100	8	27	9	30	1	3	4	13	0	0	2	7	6	20
LONG ISLAND	17	100	4	24	1	6	2	12	2	12	1	6	1	6	6	35
REST OF BAHAMAS	75	100	14	19	17	23	2	2	8	11	5	7	4	5	25	33
ABROAD	49	100	12	24	6	12	0	0	8	16	5	10	4	8	14	29
TOTAL	1,993	100	419	21	380	19	109	5	240	12	109	5	150	8	586	29

Age-Specific Fertility Rates Based on Live Births Occurrences,  
All Bahamas: 2011 - 2012

CHART V



AGE-SPECIFIC FERTILITY RATES,  
 BASED ON LIVE-BIRTHS BY OCCURRENCE,  
 ALL BAHAMAS: 2010 - 2012

TABLE 6

AGE GROUP	2010			2011			2012		
	NUMBER OF WOMEN	NUMBER OF LIVE-BIRTHS OCCURRENCES	AGE-SPECIFIC FERTILITY RATE	NUMBER OF WOMEN	NUMBER OF LIVE-BIRTHS OCCURRENCES	AGE-SPECIFIC FERTILITY RATE	NUMBER OF WOMEN	NUMBER OF LIVE-BIRTHS OCCURRENCES	AGE-SPECIFIC FERTILITY RATE
15 - 19	15,000	575	38.3	15,630	520	33.3	15,530	541	34.8
20 - 24	13,400	1,167	87.1	14,650	883	60.3	14,970	1,121	74.9
25 - 29	12,700	1,285	101.2	13,250	1,471	111.0	13,500	1,225	90.7
30 - 34	13,900	1,115	80.2	12,900	891	69.1	12,910	1,060	82.1
35 - 39	14,300	678	47.4	14,300	993	69.4	14,030	691	49.3
40 - 44	13,900	203	14.6	14,150	139	9.8	14,320	210	14.7
45 - 49	12,200	13	1.1	13,740	98	7.1	13,840	16	1.2
TOTAL	95,400	5,036		98,620	4,995		99,100	4,864	

FERTILITY AND REPRODUCTION RATES: 2000 - 2012

TABLE 7

YEAR	GENERAL FERTILITY RATE (GFR)	TOTAL FERTILITY RATE (TFR)	GROSS REPRODUCTION RATE (GRR)	NET REPRODUCTION RATE (NRR)
2000	61.38	1.985	1.05	1.01
2001	60.90	1.995	1.00	0.94
2002	58.16	1.925	0.97	0.95
2003	55.65	1.875	0.92	0.89
2004	55.59	1.900	0.95	0.92
2005	50.00	2.050	1.01	0.99
2006	55.43	1.925	0.99	0.95
2007	61.08 R	2.140 R	0.92	0.89
2008	56.67	1.995	1.02	0.99
2009	57.70	2.025	1.02	0.98
2010	52.41	1.825	0.89	0.86
2011	50.70	1.798	0.89	0.86
2012	49.13	1.740	0.86	0.84

R - Revised

REGISTERED DEATHS BY AGE GROUP AND SEX,  
ALL BAHAMAS: 2005 - 2012

TABLE 8

AGE-GROUP	2005		2006		2007		2008		2009		2010		2011		2012	
	M	F	M	F	M	F	M	F	M	F	M	F	M	F	M	F
6 DAYS OR LESS	22	18	18	12	13	18	22	7	13	18	14	13	9	9	10	8
7 - 27 DAYS	10	15	14	9	12	9	7	4	10	6	9	6	8	3	8	11
28 DAYS OR MORE BUT LESS THAN 3 MONTHS	11	4	5	6	4	4	9	6	3	9	6	2	2	5	6	6
3 MONTHS OR MORE BUT LESS THAN 6 MONTHS	9	4	4	6	3	3	6	6	6	2	7	4	4	3	1	4
6 MONTHS OR MORE BUT LESS THAN 9 MONTHS	2	3	1	3	1	-	1	1	-	2	2	2	1	1	1	1
9 MONTHS OR MORE BUT LESS THAN 1 YEAR	1	2	-	1	-	2	2	-	-	2	1	1	2	1	-	1
1	2	2	5	2	2	1	4	2	2	4	2	3	5	3	5	5
2	3	2	1	-	-	1	3	-	-	1	2	1	1	1	2	1
3	4	2	-	-	1	-	3	3	2	1	4	3	1	1	-	1
4	1	2	-	-	-	1	-	-	1	1	1	-	-	1	3	1
5 - 9	7	3	4	5	7	4	3	-	2	2	4	2	2	7	5	4
10 - 14	6	3	4	3	6	3	7	3	8	-	4	1	5	9	6	2
15 - 19	14	7	13	12	23	4	17	6	24	7	18	7	12	17	17	10
20 - 24	23	13	31	10	26	13	27	13	41	10	39	11	41	14	42	15
25 - 29	36	17	29	28	40	14	41	10	38	19	34	7	55	25	42	7
30 - 34	55	39	51	18	40	20	37	21	40	30	39	30	58	23	52	20
35 - 39	60	35	51	38	66	43	57	30	67	31	71	37	57	25	47	37
40 - 44	73	36	73	42	66	39	65	48	76	37	69	48	68	45	57	42
45 - 49	71	45	63	49	76	54	75	49	91	47	77	50	88	53	72	58
50 - 54	64	41	71	56	97	41	95	57	89	54	74	58	95	70	84	75
55 - 59	75	52	65	43	68	48	68	47	71	43	92	65	86	57	95	53
60 - 64	80	57	79	52	79	46	71	47	79	63	89	59	92	71	83	66
65 - 69	85	58	68	53	87	72	85	68	99	73	92	72	102	78	87	60
70 - 74	86	73	86	82	86	64	102	78	100	79	103	73	101	68	95	88
75 - 79	58	74	76	78	70	74	77	81	91	105	94	91	100	93	92	84
80 - 84	50	69	70	71	46	76	61	88	65	88	68	93	73	101	81	88
85 - 89	63	81	33	61	44	70	47	82	63	81	41	72	61	81	61	55
90 - 94	21	42	21	33	26	46	22	46	23	53	39	74	30	42	30	60
95 - 99	8	15	4	15	9	23	7	25	8	36	14	19	17	23	5	30
100 +	-	5	-	2	1	4	1	4	1	5	3	9	3	6	2	9
NOT STATED	3	2	-	-	2	-	4	5	-	-	-	-	-	-	-	-
TOTAL	1,003	821	940	790	1,001	797	1,026	837	1,113	908	1,108	915	1,181	936	1,091	902

## REGISTERED DEATHS BY CAUSE AND SEX OF DECEASED, ALL BAHAMAS: 2008 - 2012

TABLE 9

GENERAL MORTALITY SELECTED LIST 2	LIST OF CAUSES FOR TABULATION OF MORTALITY, TENTH REVISION OF THE INTERNATIONAL CLASSIFICATION OF DISEASES	2008			2009			2010			2011			2012		
		BOTH SEXES	MALE	FEMALE	BOTH SEXES	MALE	FEMALE	BOTH SEXES	MALE	FEMALE	BOTH SEXES	MALE	FEMALE	BOTH SEXES	MALE	FEMALE
2-002	Diarrhoea and Gastroenteritis of Presumed Infectious Origin	-	-	-	1	1	-	5	3	2	5	5	-	2	1	1
2-003	Other Intestinal Infectious Diseases	-	-	-	1	-	1	-	-	-	-	-	-	-	-	-
2-004	Respiratory Tuberculosis	4	3	1	1	1	-	2	1	1	3	1	2	1	-	1
2-005	Other Tuberculosis	-	-	-	1	1	-	-	-	-	2	1	1	-	-	-
2-010	Meningococcal Infection	-	-	-	-	-	-	1	-	1	-	-	-	-	-	-
2-011	Septicaemia	32	13	19	31	14	17	30	19	11	34	14	20	47	19	28
2-013	Acute Poliomyelitis	-	-	-	-	-	-	-	-	-	-	-	-	-	-	-
2-016	Other Arthropod-Borne Viral Fevers and Viral Haemorrhagic Fevers	-	-	-	-	-	-	-	-	-	3	1	2	-	-	-
2-018	Viral Hepatitis	4	3	1	1	1	-	2	2	-	3	2	1	4	2	2
2-019	Human Immunodeficiency Virus (HIV) Disease	117	79	38	130	81	49	102	61	41	121	68	53	109	60	49
2-024	Remainder of Certain Infectious and Parasitic Diseases	5	2	3	6	4	2	4	1	3	6	1	5	9	7	2
2-025	Malignant Neoplasm of Lip Oral Cavity and Pharynx	7	4	3	5	4	1	9	7	2	5	4	1	12	8	4
2-026	Malignant Neoplasm of Oesophagus	2	2	-	11	8	3	16	14	2	10	9	1	7	7	-
2-027	Malignant Neoplasm of Stomach	13	9	4	16	9	7	17	11	6	21	14	7	8	5	3
2-028	Malignant Neoplasm of Colon Rectum, and Anus	44	23	21	33	20	13	30	19	11	42	22	20	31	18	13
2-029	Malignant Neoplasm of Liver and Intrahepatic Bile Ducts	4	2	2	9	4	5	7	5	2	15	8	7	14	11	3
2-030	Malignant Neoplasm of Pancreas	7	4	3	13	8	5	9	5	4	11	5	6	8	4	4
2-031	Malignant Neoplasms of Larynx	3	2	1	3	3	-	5	4	1	6	6	-	6	5	1
2-032	Malignant Neoplasm of Trachea Bronchus and Lung	30	23	7	31	20	11	36	24	12	36	27	9	24	16	8
2-033	Malignant Melanoma of Skin	2	1	1	5	4	1	3	1	2	1	1	-	1	1	-
2-034	Malignant Neoplasm of Breast	44	-	44	42	2	40	67	-	67	61	1	60	53	1	52
2-035	Malignant Neoplasm of Cervix Uteri	9	-	9	20	-	20	15	-	15	13	-	13	18	-	18
2-036	Malignant Neoplasm of Other and Unspecified Parts of Uterus	6	-	6	10	-	10	8	-	8	11	-	11	10	-	10
2-037	Malignant Neoplasm of Ovary	18	-	18	12	-	12	7	-	7	7	-	7	12	-	12
2-038	Malignant Neoplasms of Prostate	59	59	-	47	47	-	47	47	-	52	52	-	62	62	-
2-039	Malignant Neoplasm of Bladder	3	2	1	6	4	2	3	1	2	6	3	3	2	2	-
2-040	Malignant Neoplasm of Meninges Brain & Other Parts of the Central Nervous System	12	5	7	11	3	8	5	3	2	7	5	2	4	2	2
2-041	Non-Hodgkin's Lymphoma	9	3	6	16	7	9	11	5	6	8	6	2	9	6	3
2-042	Multiple Myeloma and Malignant Plasma Cell Neoplasms	12	3	9	6	2	4	11	3	8	10	7	3	15	5	10
2-043	Leukaemias	16	4	12	14	8	6	11	9	2	7	3	4	8	3	5
2-044	Remainder of Malignant Neoplasms	55	29	26	55	30	25	58	29	29	60	36	24	63	33	30
2-045	Anaemias	11	7	4	10	5	5	12	7	5	24	16	8	10	4	6
2-046	Diabetes Mellitus	82	31	51	125	50	75	101	34	67	86	38	48	109	55	54
2-047	Malnutrition	5	4	1	1	1	-	2	1	1	3	2	1	2	1	1
2-048	Mental and Behavioural Disorders due to Psychoactive Substance Use	7	7	-	9	9	-	8	8	-	11	10	1	11	9	2
2-049	Meningitis	5	2	3	3	3	-	2	1	1	3	-	3	-	-	-

REGISTERED DEATHS BY CAUSE AND SEX OF DECEASED, ALL BAHAMAS: 2008- 2012

TABLE 3 (Cont'd)

GENERAL MORTALITY SELECTED LIST 2	LIST OF CAUSES FOR TABULATION OF MORTALITY, TENTH REVISION OF THE INTERNATIONAL CLASSIFICATION OF DISEASES	2008			2009			2010			2011			2012		
		BOTH SEXES	MALE	FEMALE	BOTH SEXES	MALE	FEMALE	BOTH SEXES	MALE	FEMALE	BOTH SEXES	MALE	FEMALE	BOTH SEXES	MALE	FEMALE
2-050	Alzheimer's Disease	22	5	17	16	6	10	8	3	5	25	9	16	18	4	14
2-051	Acute Rheumatic Fever and Chronic Rheumatic Heart Diseases	2	2	-	2	1	1	3	2	1	4	2	2	2	-	2
2-052	Hypertensive Diseases	158	76	82	217	109	108	192	86	106	214	98	116	149	65	84
2-053	Ischaemic Heart Diseases	165	82	83	159	101	58	174	110	64	180	103	77	174	106	68
2-054	Other Heart Diseases	120	68	52	136	66	70	124	73	51	141	74	67	94	48	46
2-055	Cerebrovascular Diseases	149	79	70	138	58	80	147	62	85	130	60	70	150	76	74
2-056	Atherosclerosis	1	-	1	2	-	2	1	1	-	2	-	2	-	-	-
2-057	Remainder of Diseases of the Circulatory System	31	19	12	28	15	13	42	26	16	35	16	19	35	16	19
2-059	Pneumonia	46	26	20	59	27	32	67	32	35	54	29	25	71	26	45
2-060	Other Acute Lower Respiratory Infections	-	-	-	-	-	-	1	-	1	-	-	-	-	-	-
2-061	Chronic Lower Respiratory Diseases	15	10	5	22	17	5	21	16	5	20	14	6	21	15	6
2-062	Remainder of Diseases of the Respiratory System	20	11	9	27	16	11	22	14	8	34	19	15	27	16	11
2-063	Gastric and Duodenal Ulcer	3	2	1	7	6	1	9	8	1	10	9	1	7	5	2
2-064	Diseases of the Liver	34	27	7	36	22	14	35	24	11	31	22	9	33	20	13
2-065	Glomerular and Renal Tubulo-Interstitial Diseases	8	8	-	6	2	4	12	4	8	9	3	6	14	9	5
2-066	Pregnancy with Abortive Outcome	-	-	-	-	-	-	-	-	-	-	-	-	1	-	1
2-067	Other Direct Obstetric Deaths	3	-	3	4	-	4	5	-	5	-	-	-	1	-	1
2-068	Indirect Obstetric Deaths	-	-	-	2	-	2	-	-	-	-	-	-	-	-	-
2-069	Certain Conditions Originating in the Perinatal Period	37	27	10	43	20	23	32	17	15	29	16	13	28	14	14
2-070	Congenital Malformations Deformations and Chromosomal Abnormalities	10	7	3	9	6	3	13	8	5	15	10	5	11	7	4
2-071	Symptoms Signs and Abnormal Clinical and Laboratory Findings Not Elsewhere Classified	31	9	22	26	17	9	39	20	19	30	13	17	28	17	11
2-072	All Other Diseases	171	72	99	174	87	87	197	93	104	201	99	102	218	104	114
2-073	Transportation Accidents	64	44	20	61	49	12	55	44	11	47	43	4	48	35	13
2-074	Falls	3	3	-	5	3	2	7	4	3	2	1	1	7	6	1
2-075	Accidental Drowning and Submersion	23	17	6	32	26	6	20	15	5	24	19	5	19	16	3
2-076	Exposure to Smoke Fire and Flames	4	3	1	4	2	2	6	5	1	15	6	9	1	1	-
2-077	Accidental Poisoning by Exposure to Noxious Substances	-	-	-	1	1	-	5	5	-	2	1	1	1	-	1
2-078	Intentional Self-Harm	4	4	-	6	5	1	10	6	4	4	3	1	6	5	1
2-079	Assault	76	69	7	88	78	10	100	85	15	129	115	14	126	112	14
2-080	All Other External Causes	36	30	6	26	19	7	30	20	10	37	29	8	32	21	11
	<b>TOTAL</b>	<b>1,863</b>	<b>1,026</b>	<b>837</b>	<b>2,021</b>	<b>1113</b>	<b>908</b>	<b>2,023</b>	<b>1,108</b>	<b>915</b>	<b>2,117</b>	<b>1,181</b>	<b>936</b>	<b>1,993</b>	<b>1,091</b>	<b>902</b>

**SECTION 1**  
**LIVE BIRTH**



**REGISTERED LIVE-BIRTHS BY USUAL RESIDENCE AND  
AGE GROUP OF MOTHER, ALL BAHAMAS: 2012**

**TABLE 10**

USUAL RESIDENCE OF MOTHER	AGE-GROUP OF MOTHER										
	TOTAL	10- 14	15- 19	20- 24	25- 29	30- 34	35- 39	40- 44	45- 49	50& OVER	NOT STATED
NEW PROVIDENCE	3,330	3	377	761	848	709	467	155	10	-	-
GRAND BAHAMA	672	1	75	165	169	150	86	24	2	-	-
ABACO	173	-	18	42	39	45	25	3	1	-	-
ACKLINS	6	-	2	-	1	1	1	1	-	-	-
ANDROS	53	-	3	11	18	12	7	2	-	-	-
BERRY ISLANDS	6	-	-	-	1	1	4	-	-	-	-
BIMINIS	15	-	1	4	4	2	3	1	-	-	-
CAT ISLAND	10	-	1	1	2	3	2	-	1	-	-
CROOKED ISLAND AND LONG CAY	2	-	1	-	-	1	-	-	-	-	-
ELEUTHERA	81	-	6	16	16	18	21	3	1	-	-
EXUMA AND CAYS	52	-	8	11	11	16	6	-	-	-	-
HARBOUR ISLAND	11	-	-	2	-	5	4	-	-	-	-
INAGUA	8	-	-	4	2	2	-	-	-	-	-
LONG ISLAND	24	-	4	5	7	4	2	2	-	-	-
MAYAGUANA	2	-	-	-	-	1	1	-	-	-	-
RAGGED ISLAND	-	-	-	-	-	-	-	-	-	-	-
SAN SALVADOR AND RUM CAY	7	-	-	-	2	2	1	2	-	-	-
SPANISH WELLS	11	-	-	5	3	1	2	-	-	-	-
ABROAD	6	-	1	2	1	-	2	-	-	-	-
NOT STATED	-	-	-	-	-	-	-	-	-	-	-
<b>TOTAL</b>	<b>4,469</b>	<b>4</b>	<b>497</b>	<b>1,029</b>	<b>1,124</b>	<b>973</b>	<b>634</b>	<b>193</b>	<b>15</b>	<b>-</b>	<b>-</b>

REGISTERED LIVE-BIRTHS BY MONTH, SEX AND USUAL RESIDENCE OF MOTHER, ALL BAHAMAS: 2012

TABLE 11

USUAL RESIDENCE OF MOTHER	MONTH OF BIRTH AND SEX OF CHILD																									
	TOTAL		JAN		FEB		MAR		APR		MAY		JUN		JUL		AUG		SEP		OCT		NOV		DEC	
	M	F	M	F	M	F	M	F	M	F	M	F	M	F	M	F	M	F	M	F	M	F	M	F	M	F
NEW PROVIDENCE	1,701	1,629	148	149	127	125	125	121	82	92	104	108	122	118	160	151	179	165	171	152	187	165	156	135	140	148
GRAND BAHAMA	330	342	31	29	24	28	28	30	20	24	19	21	22	20	28	32	30	22	29	37	49	30	32	29	18	40
ABACO	86	87	9	8	7	4	6	6	7	4	4	8	12	7	6	8	9	11	9	6	3	8	7	10	7	7
ACKLINS	4	2	-	-	-	-	-	-	1	-	1	-	-	-	-	1	1	-	-	-	-	1	-	-	1	-
ANDROS	35	18	3	3	4	-	-	2	-	-	7	2	4	3	3	2	2	1	2	1	6	1	3	2	1	1
BERRY ISLANDS	4	2	1	1	-	-	-	-	-	-	-	-	1	-	1	-	-	1	-	-	-	-	-	-	-	1
BIMINIS	7	8	-	-	-	-	1	-	1	1	1	-	1	1	1	1	1	-	-	1	1	2	-	-	-	2
CAT ISLAND	1	9	-	2	-	-	-	1	-	-	-	1	-	-	-	-	1	-	-	1	-	1	-	2	-	1
CROOKED ISLAND AND LONG CAY	2	-	-	-	1	-	-	-	-	-	-	-	-	-	-	-	-	-	1	-	-	-	-	-	-	-
ELEUTHERA	40	41	7	4	2	4	2	2	2	1	1	2	3	-	4	3	5	11	4	6	3	-	6	7	1	1
EXUMA AND CAYS	31	21	6	-	1	1	1	-	1	-	3	5	5	1	4	2	-	2	1	3	3	2	2	3	4	2
HARBOUR ISLAND	7	4	-	-	1	-	1	-	-	-	-	-	2	-	-	1	2	-	1	-	-	-	-	-	-	3
INAGUA	5	3	-	-	-	2	-	-	1	-	-	-	-	-	-	-	1	-	2	-	1	-	-	-	-	1
LONG ISLAND	16	8	1	2	1	1	-	-	1	1	2	1	3	-	-	-	2	3	1	-	2	-	-	-	3	-
MAYAGUNA	2	-	-	-	1	-	-	-	-	-	-	-	-	-	1	-	-	-	-	-	-	-	-	-	-	-
RAGGED ISLAND	-	-	-	-	-	-	-	-	-	-	-	-	-	-	-	-	-	-	-	-	-	-	-	-	-	-
SAN SALVADOR AND RUM CAY	2	5	-	-	-	1	-	-	-	-	-	3	-	-	-	-	-	-	2	-	-	-	-	1	-	-
SPANISH WELLS	4	7	1	1	-	-	-	1	-	1	-	1	-	1	-	1	-	2	1	-	-	-	-	-	1	1
ABROAD	3	3	-	-	1	-	-	-	-	-	-	-	-	-	-	-	-	1	1	-	1	-	-	1	-	1
NOT STATED	-	-	-	-	-	-	-	-	-	-	-	-	-	-	-	-	-	-	-	-	-	-	-	-	-	-
<b>TOTAL</b>	<b>2,280</b>	<b>2,189</b>	<b>207</b>	<b>199</b>	<b>170</b>	<b>166</b>	<b>164</b>	<b>163</b>	<b>116</b>	<b>124</b>	<b>142</b>	<b>152</b>	<b>175</b>	<b>151</b>	<b>208</b>	<b>201</b>	<b>235</b>	<b>217</b>	<b>225</b>	<b>207</b>	<b>255</b>	<b>211</b>	<b>206</b>	<b>189</b>	<b>177</b>	<b>209</b>

**REGISTERED LIVE-BIRTHS BY REGION, AGE GROUP AND MARITAL STATUS OF MOTHER,  
ALL BAHAMAS: 2012**

**TABLE 12**

USUAL RESIDENCE AND MARITAL STATUS OF MOTHER	TOTAL	AGE GROUP OF MOTHER									
		10 - 14	15 - 19	20 - 24	25 - 29	30 - 34	35 - 39	40 - 44	45 - 49	50 +	NOT STATED
<b>ALL BAHAMAS</b>	<b>4469</b>	<b>4</b>	<b>497</b>	<b>1029</b>	<b>1124</b>	<b>973</b>	<b>634</b>	<b>193</b>	<b>15</b>	-	-
SINGLE	2778	4	481	853	684	423	255	71	7	-	-
MARRIED	1653	-	15	175	436	542	364	113	8	-	-
WIDOWED	7	-	1	-	1	3	-	2	-	-	-
DIVORCED	25	-	-	-	1	3	14	7	-	-	-
NOT STATED	6	-	-	1	2	2	1	-	-	-	-
<b>NEW PROVIDENCE</b>	<b>3330</b>	<b>3</b>	<b>377</b>	<b>761</b>	<b>848</b>	<b>709</b>	<b>467</b>	<b>155</b>	<b>10</b>	-	-
SINGLE	2121	3	365	646	526	327	192	56	6	-	-
MARRIED	1175	-	11	115	318	376	261	90	4	-	-
WIDOWED	7	-	1	-	1	3	-	2	-	-	-
DIVORCED	23	-	-	-	1	2	13	7	-	-	-
NOT STATED	4	-	-	-	2	1	1	-	-	-	-
<b>GRAND BAHAMA</b>	<b>672</b>	<b>1</b>	<b>75</b>	<b>165</b>	<b>169</b>	<b>150</b>	<b>86</b>	<b>24</b>	<b>2</b>	-	-
SINGLE	403	1	72	131	100	61	29	9	-	-	-
MARRIED	266	-	3	33	69	87	57	15	2	-	-
WIDOWED	-	-	-	-	-	-	-	-	-	-	-
DIVORCED	1	-	-	-	-	1	-	-	-	-	-
NOT STATED	2	-	-	1	-	1	-	-	-	-	-
<b>OTHER ISLANDS</b>	<b>461</b>	-	<b>44</b>	<b>101</b>	<b>106</b>	<b>114</b>	<b>79</b>	<b>14</b>	<b>3</b>	-	-
SINGLE	251	-	43	74	58	35	34	6	1	-	-
MARRIED	209	-	1	27	48	79	44	8	2	-	-
WIDOWED	-	-	-	-	-	-	-	-	-	-	-
DIVORCED	1	-	-	-	-	-	1	-	-	-	-
NOT STATED	-	-	-	-	-	-	-	-	-	-	-
<b>NOT STATED</b>	<b>6</b>	-	<b>1</b>	<b>2</b>	<b>1</b>	-	<b>2</b>	-	-	-	-
SINGLE	3	-	1	2	-	-	-	-	-	-	-
MARRIED	3	-	-	-	1	-	2	-	-	-	-
WIDOWED	-	-	-	-	-	-	-	-	-	-	-
DIVORCED	-	-	-	-	-	-	-	-	-	-	-
NOT STATED	-	-	-	-	-	-	-	-	-	-	-

REGISTERED LIVE-BIRTHS BY BIRTH ORDER AND AGE GROUP OF MOTHER,  
ALL BAHAMAS: 2012

TABLE 13

MOTHERS' AGE (AT BIRTH OF CHILD)	TOTAL	1	2	3	4	5	6	7	8	9	10+	UNKNOWN
10 - 14	4	4	-	-	-	-	-	-	-	-	-	-
15 - 19	497	456	39	3	-	-	-	-	-	-	-	-
20 - 24	1,029	626	306	77	16	3	1	-	-	-	-	-
25 - 29	1,124	398	395	233	73	18	5	2	-	-	-	-
30 - 34	973	199	312	242	140	55	21	3	1	-	-	-
35 - 39	634	93	180	138	105	71	24	13	8	1	1	-
40 - 44	193	28	36	42	38	28	13	4	2	2	-	-
45 - 49	15	5	5	1	-	2	3	1	1	-	-	-
50 AND OVER	-	-	-	-	-	-	-	-	-	-	-	-
NOT STATED	-	-	-	-	-	-	-	-	-	-	-	-
<b>TOTAL</b>	<b>4,469</b>	<b>1,809</b>	<b>1,273</b>	<b>736</b>	<b>372</b>	<b>177</b>	<b>67</b>	<b>23</b>	<b>12</b>	<b>3</b>	<b>1</b>	<b>-</b>

**SECTION II  
INFANT DEATHS**

REGISTERED STILLBIRTHS AND INFANT DEATHS BY DURATION OF LIFE, ISLAND AND MONTH OF OCCURRENCE, ALL BAHAMAS: 2012

TABLE 14

DURATION OF LIFE AND ISLAND OF OCCURRENCE	TOTAL	MONTH OF OCCURRENCE												NOT STATED
		JAN	FEB	MAR	APR	MAY	JUN	JUL	AUG	SEP	OCT	NOV	DEC	
ALL BAHAMAS (INFANT DEATHS AND STILLBIRTHS)	76	10	5	3	5	3	5	8	10	5	7	6	9	-
TOTAL INFANT DEATHS	57	7	5	2	5	1	4	5	5	3	6	6	8	-
0 DAYS (STILLBORN)	19	3	-	1	-	2	1	3	5	2	1	-	1	-
UNDER 28 DAYS	37	3	3	1	2	-	3	1	5	2	5	6	6	-
28 DAYS OR MORE BUT LESS THAN 3 MONTHS	12	3	1	1	1	-	1	2	-	1	1	-	1	-
3 MONTHS OR MORE BUT LESS THAN 6 MONTHS	5	1	1	-	1	1	-	-	-	-	-	-	1	-
6 MONTHS OR MORE BUT LESS THAN 9 MONTHS	2	-	-	-	1	-	-	1	-	-	-	-	-	-
9 MONTHS OR MORE BUT LESS THAN 12 MONTHS	1	-	-	-	-	-	-	1	-	-	-	-	-	-
NEW PROVIDENCE	73	9	5	3	5	3	4	8	10	5	7	6	8	-
0 DAYS (STILLBORN)	16	2	-	1	-	2	-	3	5	2	1	-	-	-
UNDER 28 DAYS	37	3	3	1	2	-	3	1	5	2	5	6	6	-
28 DAYS OR MORE BUT LESS THAN 3 MONTHS	12	3	1	1	1	-	1	2	-	1	1	-	1	-
3 MONTHS OR MORE BUT LESS THAN 6 MONTHS	5	1	1	-	1	1	-	-	-	-	-	-	1	-
6 MONTHS OR MORE BUT LESS THAN 9 MONTHS	2	-	-	-	1	-	-	1	-	-	-	-	-	-
9 MONTHS OR MORE BUT LESS THAN 12 MONTHS	1	-	-	-	-	-	-	1	-	-	-	-	-	-
GRAND BAHAMA	3	1	-	-	-	1	-	-	-	-	-	-	1	-
0 DAYS (STILLBORN)	3	1	-	-	-	1	-	-	-	-	-	-	1	-
UNDER 28 DAYS	-	-	-	-	-	-	-	-	-	-	-	-	-	-
28 DAYS OR MORE BUT LESS THAN 3 MONTHS	-	-	-	-	-	-	-	-	-	-	-	-	-	-
3 MONTHS OR MORE BUT LESS THAN 6 MONTHS	-	-	-	-	-	-	-	-	-	-	-	-	-	-
6 MONTHS OR MORE BUT LESS THAN 9 MONTHS	-	-	-	-	-	-	-	-	-	-	-	-	-	-
9 MONTHS OR MORE BUT LESS THAN 12 MONTHS	-	-	-	-	-	-	-	-	-	-	-	-	-	-
OTHER ISLANDS	-	-	-	-	-	-	-	-	-	-	-	-	-	-
0 DAYS (STILLBORN)	-	-	-	-	-	-	-	-	-	-	-	-	-	-
UNDER 28 DAYS	-	-	-	-	-	-	-	-	-	-	-	-	-	-
28 DAYS OR MORE BUT LESS THAN 3 MONTHS	-	-	-	-	-	-	-	-	-	-	-	-	-	-
3 MONTHS OR MORE BUT LESS THAN 6 MONTHS	-	-	-	-	-	-	-	-	-	-	-	-	-	-
6 MONTHS OR MORE BUT LESS THAN 9 MONTHS	-	-	-	-	-	-	-	-	-	-	-	-	-	-
9 MONTHS OR MORE BUT LESS THAN 12 MONTHS	-	-	-	-	-	-	-	-	-	-	-	-	-	-

REGISTERED INFANT DEATHS BY CAUSE, SEX AND DURATION OF LIFE, ALL BAHAMAS: 2012

TABLE 15

GENERAL MORTALITY LIST 3	LIST OF CAUSES FOR TABULATION OF MORTALITY, TENTH REVISION OF THE INTERNATIONAL CLASSIFICATION OF DISEASES	SEX AND DURATION OF LIFE														NOT STATED	
		TOTAL		6 DAYS OR LESS		7 - 27 DAYS		28 DAYS OR MORE BUT LESS THAN 3 MONTHS		3 MONTHS OR MORE BUT LESS THAN 6 MONTHS		6 MONTHS OR MORE BUT LESS THAN 9 MONTHS		9 MONTHS OR MORE BUT LESS THAN 12 MONTHS			
		M	F	M	F	M	F	M	F	M	F	M	F	M	F		
3-001	CERTAIN INFECTIOUS AND PARASITIC DISEASES	2	6	-	-	-	-	1	3	1	2	-	1	-	-	-	-
3-015	Septicaemia	2	6	-	-	-	-	1	3	1	2	-	1	-	-	-	-
3-020	DISEASES OF THE BLOOD AND BLOOD-FORMING ORGANS AND CERTAIN DISORDERS INVOLVING THE IMMUNE MECHANISM	1	-	-	-	1	-	-	-	-	-	-	-	-	-	-	-
3-026	DISEASES OF THE NERVOUS SYSTEM	-	1	-	-	-	-	-	-	-	1	-	-	-	-	-	-
	Remainder of Diseases of the Nervous System	-	1	-	-	-	-	-	-	-	1	-	-	-	-	-	-
3-030	DISEASES OF THE CIRCULATORY SYSTEM	2	1	-	-	-	-	1	1	-	-	1	-	-	-	-	-
3-031	DISEASES OF THE RESPIRATORY SYSTEM	3	3	-	-	-	-	3	1	-	1	-	1	-	-	-	-
3-032	Pneumonia	2	3	-	-	-	-	2	1	-	1	-	1	-	-	-	-
	Remainder of Diseases of the Respiratory system	1	-	-	-	-	-	1	-	-	-	-	-	-	-	-	-
3-036	DISEASES OF THE GENITOURINARY SYSTEM	-	2	-	1	-	1	-	-	-	-	-	-	-	-	-	-
3-037	CERTAIN CONDITIONS ORIGINATING IN THE PERINATAL PERIOD	14	14	9	6	5	8	-	-	-	-	-	-	-	-	-	-
3-038	Fetus and Newborn Affected by Maternal Factors and by Complications of Pregnancy Labour and Delivery	1	-	-	-	1	-	-	-	-	-	-	-	-	-	-	-
3-039	Disorders Relating to Length of Gestation and Fetal Growth	1	-	-	-	1	-	-	-	-	-	-	-	-	-	-	-
3-041	Intrauterine Hypoxia and Birth Asphyxia	3	-	3	-	-	-	-	-	-	-	-	-	-	-	-	-
3-042	Respiratory Distress of Newborn	1	1	1	1	-	-	-	-	-	-	-	-	-	-	-	-
3-043	Congenital Pneumonia	3	1	2	-	1	1	-	-	-	-	-	-	-	-	-	-
3-044	Other Respiratory Conditions of Newborn	2	5	1	3	1	2	-	-	-	-	-	-	-	-	-	-
3-045	Bacterial Sepsis of Newborn	1	-	-	-	1	-	-	-	-	-	-	-	-	-	-	-
3-047	Haemorrhagic and Haematological Disorders of Fetus and Newborn	2	-	2	-	-	-	-	-	-	-	-	-	-	-	-	-
3-048	Remainder of Perinatal Conditions	-	3	-	1	-	2	-	-	-	-	-	-	-	-	-	-
		-	4	-	1	-	3	-	-	-	-	-	-	-	-	-	-
3-049	CONGENITAL MALFORMATIONS, DEFORMATIONS AND CHROMOSOMAL ABNORMALITIES	3	3	1	1	2	2	-	-	-	-	-	-	-	-	-	-
3-052	Congenital Malformations of the Heart	1	2	-	1	-	1	-	-	-	-	-	-	-	-	-	-
3-054	Down's Syndrome and Other Chromosomal Abnormalities	2	1	-	-	-	1	-	-	-	-	-	-	-	-	-	-
3-055	Other Congenital Malformations	-	-	-	-	-	-	-	-	-	-	-	-	-	-	-	-
3-056	SYMPTOMS SIGNS AND ABNORMAL CLINICAL AND LABORATORY FINDINGS NOT ELSEWHERE CLASSIFIED	1	1	-	-	-	-	1	1	-	-	-	-	-	-	-	-
3-057	Sudden Infant Death Syndrome	-	1	-	-	-	-	1	-	-	-	-	-	-	-	-	-
3-058	Other Symptoms Signs and Abnormal Clinical and Laboratory Findings Not Elsewhere Classified	1	-	-	-	-	-	1	-	-	-	-	-	-	-	-	-
	TOTAL	26	31	9	8	8	11	6	6	1	4	1	2	-	-	-	-

**SECTION III**  
**DEATHS**



REGISTERED DEATHS BY CAUSE AND AGE-GROUP OF DECEASED (BOTH SEXES), ALL BAHAMAS: 2012

TABLE 16

GENERAL MORTALITY LIST 1	LIST OF CAUSES FOR TABULATION OF MORTALITY, TENTH REVISION OF THE INTERNATIONAL CLASSIFICATION OF DISEASES	AGE-GROUP OF DECEASED																			NOT STATED				
		ALL AGES	UND 1	1	2	3	4	5-9	10-14	15-19	20-24	25-29	30-34	35-39	40-44	45-49	50-54	55-59	60-64	65-69		70-74	75-79	80-84	85+
1-001	CETAIN INFECTIONS AND PARASITIC DISEASES	172	8	2	1	-	-	-	3	3	4	1	9	18	21	25	20	21	6	9	3	6	4	8	-
1-003	Diarrhoea and Gastroenteritis of Presumed Infectious Origin	2	-	-	1	-	-	-	-	-	-	-	-	-	-	1	-	-	-	-	-	-	-	-	-
1-005	Respiratory Tuberculosis	1	-	-	-	-	-	-	-	-	-	-	-	-	-	-	-	1	-	-	-	-	-	-	-
1-012	Septicaemia	47	8	2	-	-	-	-	-	1	-	-	3	1	2	4	3	2	2	2	1	6	4	8	-
1-019	Viral Hepatitis	4	-	-	-	-	-	-	-	1	-	-	-	-	-	-	2	1	-	-	-	-	-	-	-
1-020	Human Immunodeficiency Virus [HIV] Disease	109	-	-	-	-	-	3	3	2	1	8	15	20	22	13	14	1	5	2	-	-	-	-	-
1-025	Remainder of Certain Infectious and Parasitic Diseases	9	-	-	-	-	-	-	-	-	-	1	-	-	1	2	2	1	2	-	-	-	-	-	-
1-026	NEOPLASMS	380	-	2	-	1	1	3	-	2	-	1	4	15	14	22	36	31	37	38	60	48	31	34	-
1-027	Malignant Neoplasm of Lip Oral Cavity and Pharynx	12	-	-	-	-	-	-	-	-	-	-	-	-	1	1	1	2	2	1	3	-	-	1	-
1-028	Malignant Neoplasm of Oesophagus	7	-	-	-	-	-	-	-	-	-	-	-	-	-	1	3	-	1	1	1	-	-	-	-
1-029	Malignant Neoplasm of Stomach	8	-	-	-	-	-	-	-	-	-	-	-	-	1	-	-	-	-	-	3	2	-	2	-
1-030	Malignant Neoplasm of Colon, Rectum and Anus	31	-	-	-	-	-	-	-	-	1	-	1	1	1	5	-	2	5	5	5	2	3	-	-
1-031	Malignant Neoplasm of Liver and Intrahepatic Bile Ducts	14	-	-	-	-	-	-	-	-	-	-	-	-	1	1	1	2	1	3	1	4	-	-	-
1-032	Malignant Neoplasm of Pancreas	8	-	-	-	-	-	-	-	-	-	-	-	-	2	-	-	-	-	3	2	1	-	-	-
1-033	Malignant Neoplasms of Larynx	6	-	-	-	-	-	-	-	-	-	-	-	1	-	-	-	1	-	-	2	1	1	-	-
1-034	Malignant Neoplasm of Trachea Bronchus and Lung	24	-	-	-	-	-	-	-	-	-	-	1	1	1	-	5	4	2	3	3	2	2	-	-
1-035	Malignant Melanoma of Skin	1	-	-	-	-	-	-	-	-	-	-	-	-	-	1	-	-	-	-	-	-	-	-	-
1-036	Malignant Neoplasm of Breast	53	-	-	-	-	-	-	-	-	-	1	4	7	7	9	3	7	5	3	3	2	2	-	-
1-037	Malignant Neoplasm of Cervix Uteri	18	-	-	-	-	-	-	-	-	-	1	2	-	2	6	1	-	-	4	2	-	-	-	-
1-038	Malignant Neoplasm of Other and Unspecified Parts of Uterus	10	-	-	-	-	-	-	-	-	-	-	-	-	-	-	1	2	1	3	1	-	2	-	-
1-039	Malignant Neoplasm of Ovary	12	-	-	-	-	-	-	-	-	-	-	2	1	-	2	1	-	1	3	2	-	-	-	-
1-040	Malignant Neoplasms of Prostate	62	-	-	-	-	-	-	-	-	-	-	-	-	-	1	1	5	6	16	13	11	9	-	-
1-041	Malignant Neoplasm of Bladder	2	-	-	-	-	-	-	-	-	-	-	-	-	-	-	-	-	1	-	-	-	1	-	-
1-042	Malignant Neoplasm of Meninges Brain and Other Parts of the Central Nervous System	4	-	-	-	-	1	-	-	-	-	-	-	-	1	-	2	-	-	-	-	-	-	-	-
1-043	Non-Hodgkin's Lymphoma	9	-	-	-	-	-	-	-	-	-	1	1	-	-	3	1	1	-	1	-	-	1	-	-
1-044	Multiple Myeloma and Malignant Plasma Cell Neoplasms	15	-	-	-	-	-	-	-	-	-	-	-	-	1	1	3	-	2	2	2	2	2	-	-
1-045	Leukaemias	8	-	1	-	-	1	-	-	-	-	-	-	-	-	1	2	-	1	1	-	-	1	-	-
1-046	Remainder of Malignant Neoplasms	63	-	1	-	-	1	-	2	-	-	3	2	3	4	4	4	9	10	6	8	5	5	-	-
1-047	Remainder of Neoplasms	13	-	-	-	1	1	-	-	-	-	1	1	-	1	-	1	2	1	-	-	1	2	-	-
1-048	DISEASES OF THE BLOOD AND BLOOD-FORMING ORGANS AND CERTAIN DISORDERS INVOLVING THE IMMUNE MECHANISM	15	1	-	-	-	1	-	-	1	-	-	1	1	1	3	1	-	1	1	1	1	1	1	-
1-049	Anaemias	10	-	-	-	-	1	-	-	1	-	-	1	-	1	1	1	-	1	-	1	1	1	1	-
1-050	Remainder of Diseases of the Blood and Blood-Forming Organs and Certain Disorders Involving the Immune Mechanism	5	1	-	-	-	-	-	-	-	-	-	-	1	-	2	-	-	-	1	-	-	-	-	-

REGISTERED DEATH BY CAUSE AND AGE-GROUP OF DECEASED (BOTH SEXES), ALL BAHAMAS: 2012

TABLE 16 (Cont'd)

GENERAL MORTALITY LIST 1	LIST OF CAUSES FOR TABULATION OF MORTALITY, TENTH REVISION OF THE INTERNATIONAL CLASSIFICATION OF DISEASES	AGE-GROUP OF DECEASED																				NOT STATED			
		ALL AGES	UND 1	1 1	2 2	3 3	4 4	5- 9	10- 14	15- 19	20- 24	25- 29	30- 34	35- 39	40- 44	45- 49	50- 54	55- 59	60- 64	65- 69	70- 74		75- 79	80- 84	85- +
1-051	ENDOCRINE NUTRITIONAL AND METABOLIC DISEASES	156	-	-	-	-	1	2	-	1	1	1	-	5	9	12	7	4	13	14	23	15	20	28	-
1-052	Diabetes Mellitus	109	-	-	-	-	1	-	1	-	-	-	-	4	6	7	6	2	11	12	18	13	15	13	-
1-053	Malnutrition	2	-	-	-	-	-	-	-	-	-	-	-	-	1	-	-	-	1	-	-	-	-	-	-
1-054	Remainder of Endocrine Nutritional and Metabolic Diseases	45	-	-	-	-	1	1	-	1	1	-	1	2	5	1	2	1	2	5	2	5	15	-	-
1-055	MENTAL AND BEHAVIOURAL DISORDERS	26	-	-	-	-	-	-	-	-	-	-	-	1	-	3	3	1	4	3	3	4	4	-	-
1-056	Mental and Behavioural Disorders Due to Psychoactive Substance Use	11	-	-	-	-	-	-	-	-	-	-	-	1	-	2	3	1	2	1	-	1	-	-	-
1-057	Remainder of Mental and Behavioural Disorders	15	-	-	-	-	-	-	-	-	-	-	-	-	-	1	-	-	2	2	3	3	4	-	-
1-058	DISEASES OF THE NERVOUS SYSTEM	42	1	1	-	-	-	-	-	3	1	3	1	1	-	4	1	3	3	1	3	8	8	-	-
1-060	Alzheimer's Disease	18	-	-	-	-	-	-	-	-	-	-	-	-	-	-	-	-	1	1	3	5	8	-	-
1-061	Remainder of Diseases of the Nervous system	24	1	1	-	-	-	-	-	3	1	3	1	1	-	4	1	3	2	-	-	3	-	-	-
1-062	DISEASES OF THE EYE AND ADNEXA	2	-	-	-	-	-	-	-	1	-	-	-	-	1	-	-	-	-	-	-	-	-	-	-
1-063	DISEASES OF THE EAR AND MASTOID PROCESS	2	-	-	-	-	-	-	-	-	-	-	-	-	-	-	-	-	1	-	-	-	1	-	-
1-064	DISEASES OF THE CIRCULATORY SYSTEM	603	3	-	-	-	-	-	-	2	5	12	16	22	34	48	48	59	55	49	69	73	108	-	-
1-065	Acute Rheumatic Fever and Chronic Rheumatic Heart Diseases	2	-	-	-	-	-	-	-	-	-	-	-	-	1	-	-	-	-	-	1	-	-	-	-
1-066	Hypertensive Diseases	149	-	-	-	-	-	-	-	-	-	1	1	4	7	11	9	12	14	12	19	20	39	-	-
1-067	Ischaemic Heart Diseases	174	-	-	-	-	-	-	-	1	-	1	2	6	10	11	20	23	17	17	21	19	26	-	-
1-068	Other Heart Diseases	94	2	-	-	-	-	-	-	1	4	5	6	5	7	8	6	5	8	4	8	6	19	-	-
1-069	Cerebrovascular Diseases	149	1	-	-	-	-	-	-	-	-	1	3	6	7	14	11	14	14	15	17	25	21	-	-
1-071	Remainder of Diseases of the Circulatory System	35	-	-	-	-	-	-	-	-	1	4	4	1	2	4	2	5	2	1	3	3	3	-	-
1-072	DISEASES OF THE RESPIRATORY SYSTEM	119	6	1	-	-	1	-	-	1	1	3	3	5	7	9	11	3	9	15	10	10	24	-	-
1-074	Pneumonia	71	5	1	-	-	1	-	-	1	-	1	2	4	3	5	6	2	4	7	6	6	17	-	-
1-076	Chronic Lower Respiratory Diseases	21	-	-	-	-	-	-	-	-	1	-	-	-	2	2	4	-	2	4	2	3	1	-	-
1-077	Remainder of Diseases of the Respiratory System	27	1	-	-	-	-	-	-	-	-	2	1	1	2	2	1	1	3	4	2	1	6	-	-
1-078	DISEASES OF THE DIGESTIVE SYSTEM	85	-	1	-	-	1	-	-	1	3	7	2	6	6	10	8	8	5	11	7	4	5	-	-
1-079	Gastric and Duodenal Ulcer	7	-	-	-	-	-	-	-	-	1	-	-	-	1	-	-	2	-	1	1	-	1	-	-
1-080	Diseases of the Liver	33	-	-	-	-	-	-	-	-	-	4	2	2	2	6	7	3	-	3	2	1	1	-	-
1-081	Remainder of Diseases of the Digestive System	45	-	1	-	-	1	-	-	1	2	3	-	4	3	4	1	3	5	7	4	3	3	-	-

REGISTERED DEATHS BY CAUSE AND AGE-GROUP OF DECEASED (BOTH SEXES), ALL BAHAMAS: 2012

TABLE 16 (Cont'd)

GENERAL MORTALITY LIST 1	LIST OF CAUSES FOR TABULATION OF MORTALITY, TENTH REVISION OF THE INTERNATIONAL CLASSIFICATION OF DISEASES	AGE-GROUP OF DECEASED																				NOT STATED			
		ALL AGES	UND 1	1	2	3	4	5-9	10-14	15-19	20-24	25-29	30-34	35-39	40-44	45-49	50-54	55-59	60-64	65-69	70-74		75-79	80-84	85+
1-082	DISEASES OF THE SKIN AND SUBCUTANEOUS TISSUE	17	-	-	-	-	-	-	-	-	-	1	-	-	1	1	-	-	-	-	3	1	3	7	-
1-083	DISEASES OF THE MUSCULOSKELETAL SYSTEM AND CONNECTIVE TISSUE	14	-	-	-	-	-	-	-	-	-	1	-	1	-	1	2	2	3	1	1	-	-	2	-
1-084	DISEASES OF THE GENITOURINARY SYSTEM	50	2	-	-	-	-	-	-	-	-	1	-	1	1	4	5	3	3	8	8	6	8	-	-
1-085	Glomerular and Renal Tubulo-Interstitial Diseases	14	-	-	-	-	-	-	-	-	-	-	-	-	-	2	2	1	1	2	3	-	3	-	-
1-086	Remainder of Diseases of the Genitourinary System	36	2	-	-	-	-	-	-	-	-	1	-	1	1	2	3	2	2	6	5	6	5	-	-
1-087	PREGNANCY CHILDBIRTH AND THE PUERPERIUM	2	-	-	-	-	-	-	1	-	-	-	1	-	-	-	-	-	-	-	-	-	-	-	-
1-088	Pregnancy with Abortive Outcome	1	-	-	-	-	-	-	-	-	-	-	1	-	-	-	-	-	-	-	-	-	-	-	-
1-090	Indirect Obstetric Deaths	1	-	-	-	-	-	-	1	-	-	-	-	-	-	-	-	-	-	-	-	-	-	-	-
1-092	CERTAIN CONDITIONS ORIGINATING IN THE PERINATAL PERIOD	28	28	-	-	-	-	-	-	-	-	-	-	-	-	-	-	-	-	-	-	-	-	-	-
1-093	CONGENITAL MALFUNCTIONS DEFORMATIONS AND CHROMOSOMAL ABNORMALITIES	11	6	-	1	-	-	1	-	1	-	1	-	1	-	-	-	-	-	-	-	-	-	-	-
1-094	SYMPTOMS SIGNS AND ABNORMAL CLINICAL AND LABORATORY FINDINGS NOT ELSEWHERE CLASSIFIED	28	2	-	-	-	-	1	-	2	1	-	-	3	2	1	2	-	1	-	-	1	12	-	-
1-095	EXTERNAL CAUSES OF MORBIDITY AND MORTALITY	241	-	3	1	-	-	2	4	19	41	32	33	20	14	17	12	11	12	4	5	5	3	3	-
1-096	Transportation Accidents	48	-	1	1	-	-	1	2	7	11	2	6	2	1	5	2	3	3	-	1	-	-	-	-
1-097	Falls	7	-	-	-	-	-	-	-	-	-	1	-	-	-	1	-	-	1	-	1	1	1	1	-
1-098	Accidental Drowning and Submersion	19	-	1	-	-	-	-	-	1	1	5	1	2	-	2	-	2	2	2	2	-	-	-	-
1-099	Exposure to Smoke Fire and Flames	1	-	-	-	-	-	1	-	-	-	-	-	-	-	-	-	-	-	-	-	-	-	-	-
1-100	Accidental Poisoning by and Exposure to Noxious Substances	1	-	-	-	-	-	-	-	1	-	-	-	-	-	-	-	-	-	-	-	-	-	-	-
1-101	Intentional Self-Harm	6	-	-	-	-	-	-	1	1	-	1	1	-	-	2	-	-	-	-	-	-	-	-	-
1-102	Assault	126	-	1	-	-	-	1	-	11	27	27	19	14	8	8	3	5	2	-	-	1	1	-	-
1-103	All Other External Causes	33	-	1	-	-	-	1	-	-	1	3	2	3	3	3	3	4	2	1	3	1	2	-	-
	TOTAL	1,993	57	10	3	1	4	9	8	27	57	49	72	84	99	130	159	148	149	147	183	176	169	252	-

**REGISTERED DEATHS BY AGE-GROUP AND MARITAL STATUS OF  
DECEASED (BOTH SEXES), ALL BAHAMAS: 2012**

**TABLE 17**

AGE - GROUP OF DECEASED	MARITAL STATUS					
	TOTAL	SINGLE	MARRIED	WIDOWED	DIVORCED	NOT STATED
<b>LESS THAN 10</b>	<b>84</b>	<b>84</b>	<b>-</b>	<b>-</b>	<b>-</b>	<b>-</b>
<b>10 - 14</b>	<b>8</b>	<b>8</b>	<b>-</b>	<b>-</b>	<b>-</b>	<b>-</b>
<b>15 - 19</b>	<b>27</b>	<b>27</b>	<b>-</b>	<b>-</b>	<b>-</b>	<b>-</b>
<b>20 - 24</b>	<b>57</b>	<b>55</b>	<b>2</b>	<b>-</b>	<b>-</b>	<b>-</b>
<b>25 - 29</b>	<b>49</b>	<b>46</b>	<b>3</b>	<b>-</b>	<b>-</b>	<b>-</b>
<b>30 - 34</b>	<b>72</b>	<b>58</b>	<b>12</b>	<b>1</b>	<b>1</b>	<b>-</b>
<b>35 - 39</b>	<b>84</b>	<b>49</b>	<b>32</b>	<b>1</b>	<b>2</b>	<b>-</b>
<b>40 - 44</b>	<b>99</b>	<b>50</b>	<b>42</b>	<b>2</b>	<b>5</b>	<b>-</b>
<b>45 - 49</b>	<b>130</b>	<b>61</b>	<b>60</b>	<b>2</b>	<b>7</b>	<b>-</b>
<b>50 - 54</b>	<b>159</b>	<b>73</b>	<b>69</b>	<b>5</b>	<b>12</b>	<b>-</b>
<b>55 - 59</b>	<b>148</b>	<b>54</b>	<b>71</b>	<b>11</b>	<b>12</b>	<b>-</b>
<b>60 - 64</b>	<b>149</b>	<b>54</b>	<b>60</b>	<b>16</b>	<b>19</b>	<b>-</b>
<b>65 - 69</b>	<b>147</b>	<b>37</b>	<b>72</b>	<b>26</b>	<b>12</b>	<b>-</b>
<b>70 - 74</b>	<b>183</b>	<b>29</b>	<b>90</b>	<b>49</b>	<b>15</b>	<b>-</b>
<b>75 - 79</b>	<b>176</b>	<b>29</b>	<b>69</b>	<b>64</b>	<b>14</b>	<b>-</b>
<b>80 - 84</b>	<b>169</b>	<b>25</b>	<b>61</b>	<b>76</b>	<b>7</b>	<b>-</b>
<b>85 - 89</b>	<b>116</b>	<b>18</b>	<b>35</b>	<b>62</b>	<b>1</b>	<b>-</b>
<b>90 - 94</b>	<b>90</b>	<b>15</b>	<b>15</b>	<b>59</b>	<b>1</b>	<b>-</b>
<b>95 - 99</b>	<b>35</b>	<b>4</b>	<b>1</b>	<b>30</b>	<b>-</b>	<b>-</b>
<b>100 +</b>	<b>11</b>	<b>1</b>	<b>-</b>	<b>10</b>	<b>-</b>	<b>-</b>
<b>NOT STATED</b>	<b>-</b>	<b>-</b>	<b>-</b>	<b>-</b>	<b>-</b>	<b>-</b>
<b>TOTAL</b>	<b>1,993</b>	<b>777</b>	<b>694</b>	<b>414</b>	<b>108</b>	<b>-</b>

**SECTION IV  
MARRIAGES**

MARRIAGES BY ISLAND AND MONTH OF OCCURRENCE, ALL BAHAMAS: 2012

TABLE 18

ISLAND OF OCCURRENCE	TOTAL	MONTH OF OCCURRENCE												NOT STATED
		JAN	FEB	MAR	APR	MAY	JUN	JUL	AUG	SEP	OCT	NOV	DEC	
NEW PROVIDENCE	1,415	75	74	86	106	104	101	129	119	113	137	158	213	-
GRAND BAHAMA	285	14	17	22	11	25	31	30	23	25	18	32	37	-
ABACO	97	5	7	6	9	9	9	8	5	10	4	9	16	-
ACKLINS	3	-	1	-	-	-	-	-	-	-	-	1	1	-
ANDROS	15	-	1	1	2	2	1	1	1	2	1	1	2	-
BERRY ISLANDS	1	-	-	-	-	-	-	-	-	-	-	1	-	-
BIMINIS	7	1	-	-	-	1	-	-	-	2	3	-	-	-
CAT ISLAND	5	-	-	1	-	1	1	-	-	-	-	1	1	-
CAY	2	-	-	-	-	-	-	-	-	-	-	1	1	-
ELEUTHERA	41	4	4	1	5	2	2	8	3	6	-	3	3	-
EXUMA AND CAYS	47	4	2	4	-	5	-	3	3	6	8	8	4	-
HARBOUR ISLAND	5	-	1	2	-	-	-	1	-	1	-	-	-	-
INAGUA	-	-	-	-	-	-	-	-	-	-	-	-	-	-
LONG ISLAND	8	1	1	-	2	-	-	1	1	2	-	-	-	-
MAYAGUANA	1	-	-	-	-	-	-	-	-	1	-	-	-	-
RAGGED ISLAND	-	-	-	-	-	-	-	-	-	-	-	-	-	-
SAN SALVADOR AND RUM CAY	2	-	1	-	-	-	-	-	-	-	-	-	1	-
SPANISH WELLS	7	-	-	-	1	1	1	2	1	-	-	1	-	-
ABROAD	-	-	-	-	-	-	-	-	-	-	-	-	-	-
NOT STATED	-	-	-	-	-	-	-	-	-	-	-	-	-	-
<b>TOTAL</b>	<b>1,941</b>	<b>104</b>	<b>109</b>	<b>123</b>	<b>136</b>	<b>150</b>	<b>146</b>	<b>183</b>	<b>156</b>	<b>168</b>	<b>171</b>	<b>216</b>	<b>279</b>	<b>-</b>

**MARRIAGES BY PREVIOUS MARITAL STATUS OF BRIDE  
AND BRIDEGROOM, ALL BAHAMAS: 2012**

**TABLE19**

PREVIOUS MARITAL STATUS OF BRIDE	PREVIOUS MARITAL STATUS OF GROOM				
	TOTAL	SINGLE	WIDOWED	DIVORCED	NOT STATED
SINGLE	1,596	1,354	36	206	-
WIDOWED	47	20	12	15	-
DIVORCED	298	139	11	148	-
NOT STATED	-	-	-	-	-
<b>TOTAL</b>	<b>1,941</b>	<b>1,513</b>	<b>59</b>	<b>369</b>	<b>-</b>

MARRIAGES BY AGE GROUP OF BRIDE AND BRIDEGROOM, ALL BAHAMAS: 2012

TABLE 20

AGE-GROUP OF BRIDE AT TIME OF MARRIAGE	TOTAL	AGE-GROUP OF BRIDEGROOM AT TIME OF MARRIAGE										NOT STATED
		15 - 19	20 - 24	25 - 29	30 - 34	35 - 39	40 - 44	45 - 49	50 - 54	55 - 59	60 +	
15 - 19	65	3	26	20	7	7	2	-	-	-	-	-
20 - 24	326	1	108	112	65	26	6	3	2	3	-	-
25 - 29	500	2	31	198	134	81	28	18	5	3	-	-
30 - 34	347	1	21	64	104	79	41	25	7	5	-	-
35 - 39	280	-	8	19	47	95	50	32	18	11	-	-
40 - 44	187	-	4	8	28	32	38	39	20	16	2	-
45 - 49	115	-	-	2	4	15	18	27	29	20	-	-
50 - 54	65	-	-	1	4	2	6	11	16	24	1	-
55 - 59	51	-	-	-	-	2	1	-	5	43	-	-
60 +	5	-	-	-	-	-	-	2	-	2	1	-
NOT STATED	-	-	-	-	-	-	-	-	-	-	-	-
<b>TOTAL</b>	<b>1941</b>	<b>7</b>	<b>198</b>	<b>424</b>	<b>393</b>	<b>339</b>	<b>190</b>	<b>157</b>	<b>102</b>	<b>127</b>	<b>4</b>	<b>-</b>



## APPENDIX

### DEFINITIONS

The United Nations “Handbook of Vital Statistics Methods” makes the following recommendations for the definitions of the vital events analyzed in this report.

- 1) **LIVE BIRTH** is the complete expulsion or extraction from its mother of a product of conception, irrespective of the duration of pregnancy, which after separation, breathes or shows any other evidence of life, such as beating of the heart, pulsation of the umbilical cord, or definite movement of voluntary muscles whether or not the umbilical cord has been cut or the placenta is attached; each product of such a birth is considered live-born.

All live-born infants should be registered and counted as such irrespective of the period of gestation or whether alive or dead at the time of registration, and if they die at any time following birth they should also be registered and counted as deaths.

In the event of a legitimate birth the names of both the mother and the father are recorded on the birth registration form. For an illegitimate birth, the name of the mother only is recorded, except where a joint application for the name of the father to be recorded, has been made by both parents.

**DEATH** is the permanent disappearance of all evidence of life at any time after live-birth has taken place (post-natal cessation of vital functions without capability of resuscitation). This definition therefore, excludes foetal deaths.

**FOETAL DEATH** is death prior to the complete expulsion or extraction from its mother of a product of conception, irrespective of the duration of pregnancy; the death is indicated by the fact that after such separation the foetus does not breathe or show any other evidence of life, such as beating of the heart, pulsation of the umbilical cord, or definite movement of voluntary muscles.

**STILLBIRTH** refers to a “late foetal death” or the death prior to complete expulsion or extraction from its mother of a product of conception, which has attained 22 or more completed weeks of gestation, the death is indicated by the fact that after such separation, the foetus does not breathe or show any other evidence of life.

A stillbirth (or late foetal death) is registered as both a birth and a death, the sex of the stillborn child being recorded if possible. However, stillbirths are classified separately in the report and are not included with the other deaths or live-births

- 5) **INFANT DEATH** is the number of deaths before the first birthday has been attained.
- 6) **MARRIAGE** is the legal union of persons of the opposite sex. The legality of union may be established by civil, religious, or other means as recognized by the laws of each country; and irrespective of the type of marriage, each should be reported for vital statistics purposes.
- 7) **DIVORCE** is the final legal dissolution of a marriage, which is the separation of husband and wife by a judicial decree, which confers on the parties the right to civil and /or religious remarriage, according to the law of each country.

## **DEFINITIONS OF FERTILITY AND REPRODUCTION RATES**

### **CRUDE BIRTH RATE (CBR)**

The CBR indicates the number of live births per 1000 population in a given year. Most annual rates relate demographic events to the population at mid-year which is considered to be the average population at risk during the year. Births are only one component of population change, therefore the birth rate should not be confused with the growth rate which includes all components of change.

### **General Fertility Rate (GFR)**

The GFR is a more refined measure than the crude birth rate because it relates births more closely to the age-sex group at risk of giving birth (i.e., women 15-49 years of age). This eliminates distortions that might arise because of different age and sex distributions in a total population. The general fertility rate is more indicative of changes in fertility behavior than is the crude live-birth rate.

### **Total Fertility Rate (TFR)**

This is the average number of children that would be born alive to a woman (or a group of women) during her lifetime if she was to pass through all her childbearing years conforming to the age-specific fertility rates of a given year. The TFR sums up in a single number the fertility of all women at a given point in time. In effect, it says: This is the total number of children a woman would have if she had the same chance of having a birth at age 15-19 as all women that age in a given year; at age 20-24 as all women that same year; at age 25-29, and so forth up to age 49.

### **Gross Reproduction Rate (GRR)**

The GRR is the average number of daughters that would be born to a women (or group of women) during her lifetime if she passed through her childbearing years conforming to the age-specific fertility rates of a given year. This rate is like the TFR except that it counts only daughters and literally measures “reproduction” – a woman reproducing herself by having a daughter.

### **Net Reproduction Rate (NRR)**

The NRR is the average number of daughters would be born to a woman (or group of women) if she passed through her lifetime from birth conforming to the age-specific fertility and mortality rates of a given year. This rate is similar to the gross reproduction rate, but is always lower than the GRR because it takes into account the fact that some women will die before completing their childbearing years.

## **THE CALCULATION OF RATES (TABLE 1)**

<b>Crude Live-Birth Rate</b>	=	Number of live-births which occurred among the population <u>during a given year</u> X 1000 Mid-year population for the same year.
<b>General Fertility Rate</b>	=	Number of live-births which occurred among the population <u>during a given year</u> X 1000 Number of women of child-bearing age (15-49) in the same population.
<b>Total Fertility Rate</b>	=	The sum of the age-specific fertility rates per 1,000 women of child-bearing age times five (5).

<b>Gross Reproduction Rate</b>	= The total fertility rate in a given year times the proportion of total births that were female in a given year.
<b>Net Reproduction Rate</b>	= The sum of the multiplications of (a) each five-year age-specific fertility rate including only female live-births
<b>Net Reproduction Rate</b>	= The sum of the multiplications of (a) each five-year age-specific fertility rate including only female live-birth and (b) the number of person-years lived in the female stationary population (1999-2001 Life Table for the Bahamas) for the age interval corresponding to the fertility rate (c) divided by 100,000 (i.e. 100,000 new born baby girls).
<b>Crude Death Rate</b>	= $\frac{\text{Number of deaths which occurred among the population during a given year}}{\text{Mid-year population for the same year}} \times 1000$
<b>Infant Mortality Rate</b>	= $\frac{\text{Number of deaths under 1 year of age which occurred among the population during a given year}}{\text{Number of live-births which occurred among the population during the same year}} \times 1000$
<b>Stillbirth (Late Foetal Death) Rate</b>	= $\frac{\text{Number of foetal deaths of 22 or more completed weeks of gestation which occurred among the population during a given Year}}{\text{Number of live-births which occurred among the population during the same year}} \times 1000$
<b>Perinatal Mortality Rate</b>	= $\frac{\text{Number of foetal deaths of 22 or more completed weeks of gestation plus the number of infant deaths to those aged under 7 days occurring among the population during a given year}}{\text{Number of live-births which occurred among the population during the same year}} \times 1000$

This is a definition that can vary. There is no general agreement as to the range of infant mortality, which should be included. In the report the rates are calculated as defined above, but other perinatal rates may be calculated to include infant deaths aged less than 28 weeks.

<b>Neo-natal Mortality Rate</b>	=	Number of deaths under 28 days of age which occurred among the <u>population during a given year</u> X 1000
Number of live-births which		occurred among the population during the same year.
<b>Natural Increase Rate</b>	=	Subtract the crude death rate from the crude birth rate. Example, in 2008 the Natural Increase Rate per thousand was 16.2 – 5.2 = <b>11.0</b> .
<b>Crude Marriage Rate</b>	=	Number of marriages which occurred among the population <u>during a given year</u> X 1000 Mid-year population for the same year.
<b>Crude Divorce Rate</b>	=	Number of divorces which occurred among the population <u>during a given year</u> X 1000 Mid-year population for the same year.